

# The Clipper AGM 224



The Clipper AGM 224 is designed to meet the low maintenance and easy cleanout requirements of today's seedsman.

The AGM 224 features a heavy-duty steel formed frame, scotch ply hangers, a heavy-duty eccentric shoe drive and bottom blast fan.

## Screens

The AGM 224 shoe has been designed with two 24- $\frac{1}{2}$ " x 22- $\frac{1}{4}$ " screens: one screen for the top and the other one for lower separation. Over 150 different sizes of perforated metal or wire cloth screens are available.

## AGM 224 Commodity Flow

The commodity is fed into the hopper and is spread evenly across the full width of the top screen.

The product then moves across the top screen, which has openings larger than the product itself. The large foreign material is "scalped" off while the good product falls through the screen.

The bottom screen is set up for sifting. The bottom screen openings must be smaller than the commodity being cleaned. Trash, weed seeds and splits are "sifted" through the bottom screen while the good product passes over it.

Next, the product is routed through a column of air from the bottom blast fan. This blast of air effectively removes any lightweight trash and dust that may have remained after screening.

Good clean product is discharged at the bottom of the air chamber.

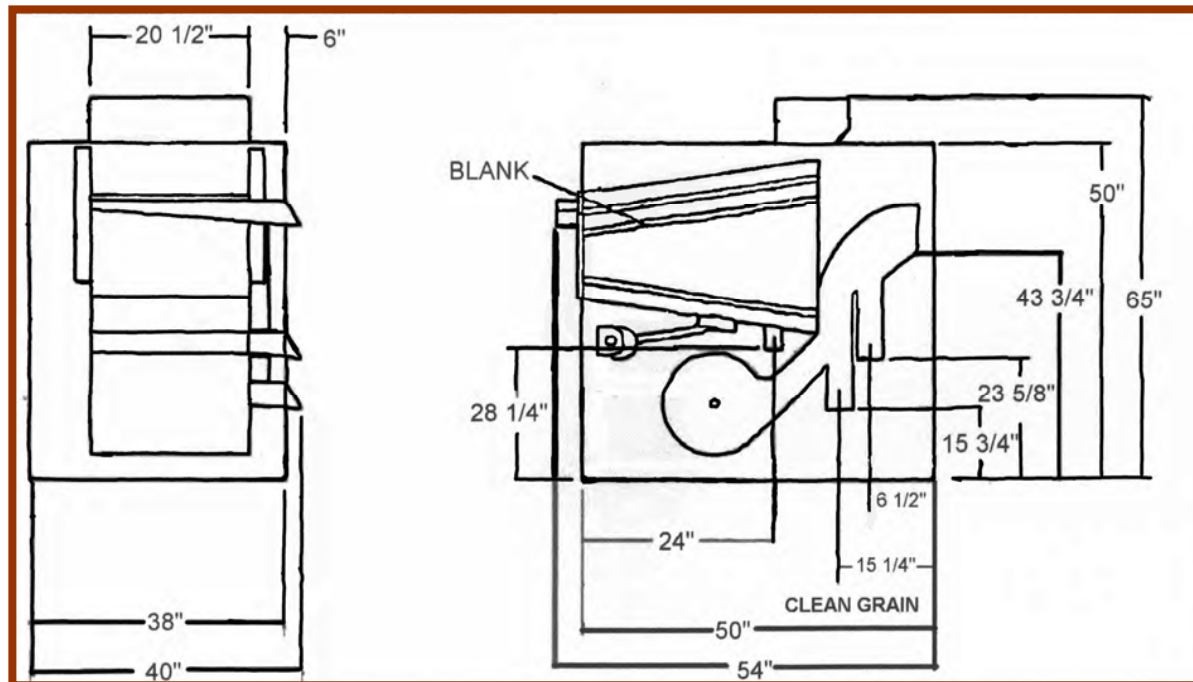


## The AGM 224 Capacities

Commodity	Fast Clean	Precision Clean
Soybeans, wheat, corn	*50 BPH	*30 BPH
Rice, oats	*40 BPH	*25 BPH

\* Note: capacities may vary depending on seed condition, moisture content, seed varieties, types, and volume of contaminants to be separated and the percentage of foreign material acceptable in the final product.

### MACHINE SHOWN WITH STANDARD DIMENSIONS



### MACHINE SHOWN WITH OPTIONAL AUGER

