



SEED & GRAIN CLEANING SCREENS

BORDER SERIES

VOLUME ONE



6 28055 10392 9



LMC CANADA

OUR COMMITMENT

LEADING EDGE INDUSTRY SOLUTIONS

Every day businesses are searching for ways to increase yield, decrease expenses and market smarter. LMC understands those needs. With over 70 years experience in designing and manufacturing processing equipment for the food industry, like our customers, Lewis M. Carter Manufacturing has seen many economic storms. We possess a unique, keen insight into today's food and recyclable industry. Our capabilities extend far beyond a typical fabrication shop. As a leader in producing World Class Machinery, LMC offers solutions tailored not only to your specific industry, but also to your specific company.

DRIVEN BY DESIGN

LMC's focus on the process application separates it from other manufacturers. This focus drives us to understand the process and design applications with specific purposes. LMC equipment is custom built for the required process whether for a food product or recyclable material and is adaptable for a variety of commodities.



GRAIN & SEED CLEANING SCREENS

WHY WE USE BORDERS ON OUR SEED SCREENS

If you order screens for your LMC, Clipper or Cimbria Air Screen Cleaner from LMC, they will always come with borders to cover the screen rails.

Why Borders? Food Safety for one. Bulk screen allows weeds and allergens to become lodged in holes that cover screen rails. Borders cover these collection points and remove the possibility of contamination that can occur. Capacity is another. As seeds get stuck in the screen, they hold back the seed flowing down your screen. The bigger the cleaner, the more screens you have and ultimately more time is required to clean the screens and keep your capacities at their optimum. Borders also eliminate the half-holes that occur between the bulk screen material and the underlying frame rail and saves you that unusable screen area.

YOU'LL FIND OUR DEDICATION TO QUALITY AND DETAIL AT THE BEST PRICE.

SCREEN APPLICATIONS



GRASS



OATS



BEANS



CANOLA



RED LENTILS



GREEN LENTILS



BARLEY



MUSTARD



NAVY BEANS



SUNFLOWER



PEANUTS



WHEAT



YELLOW PEAS



CANARY SEED

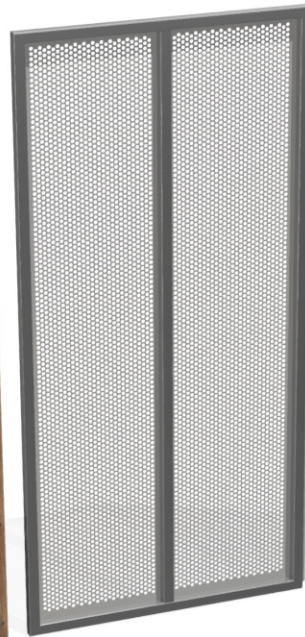
GRAIN & SEED CLEANING SCREENS

BORDER SERIES

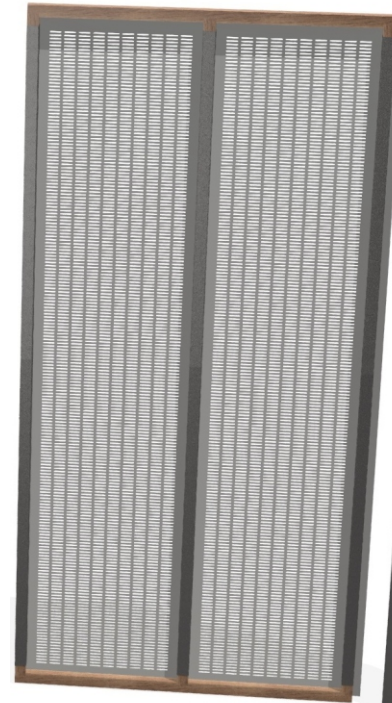
LEADING EDGE INDUSTRY SOLUTIONS



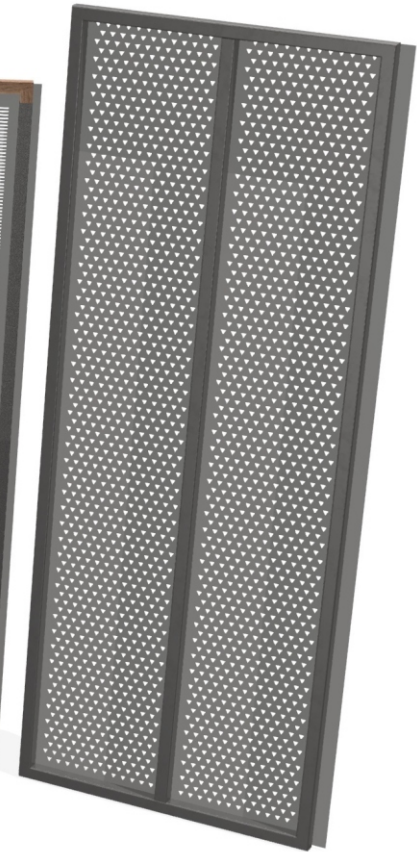
CIMBRIA SCREEN



CLIPPER SCREEN



CLIPPER SCREEN



LMC SCREEN

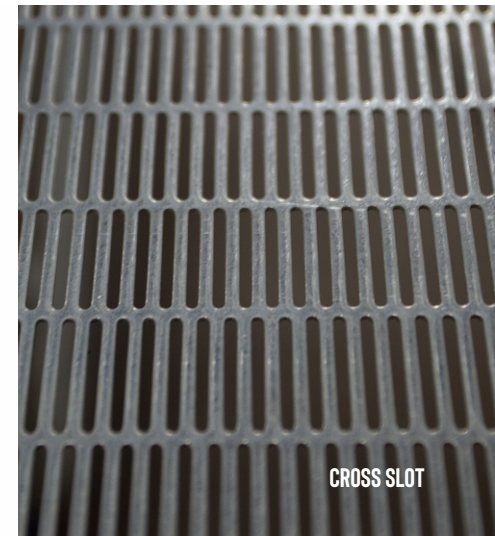
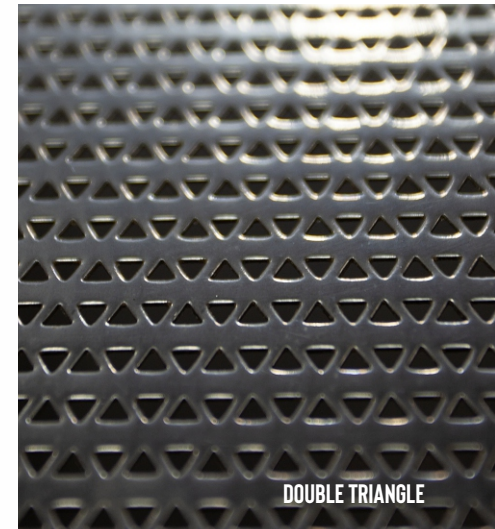
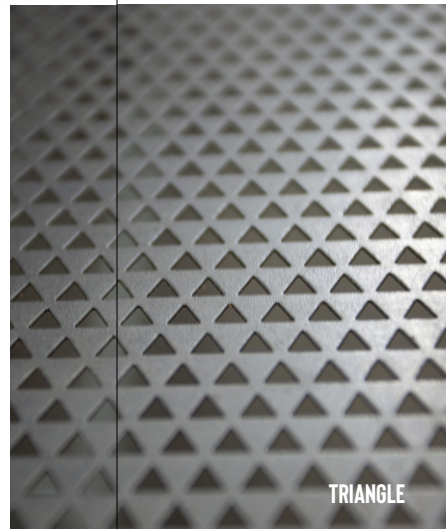
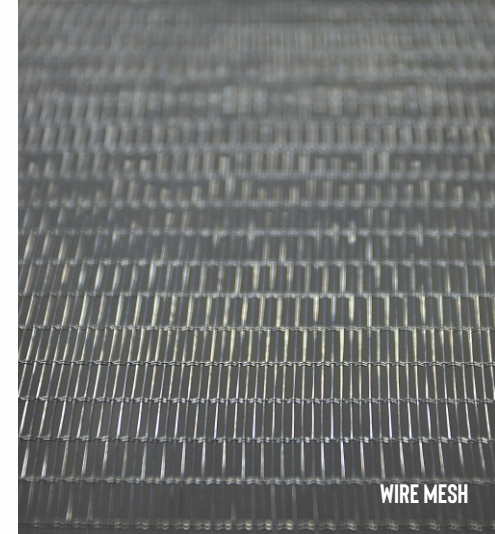
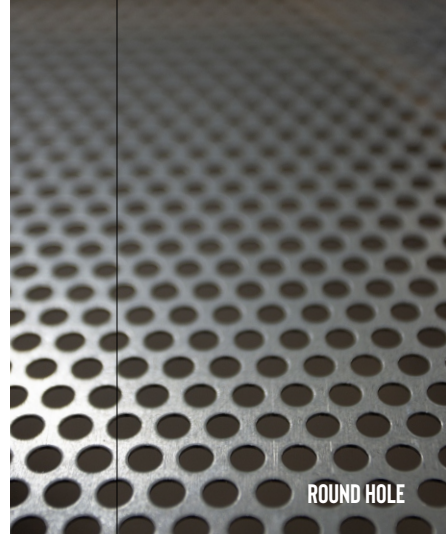
PLENTY OF PERFORATION CHOICES

LMC has been producing accurate and high quality perforated screens for over 30 years. We can provide patterns and openings used in seed and grain, recycling, tree nut, ground nut and many other industries. Our selection of openings includes: round holes, slotted openings, oblong slotted material, triangle openings, herringbone and heavy-duty wire mesh material.

LMC screens are designed for product purity, efficiency and effectiveness because LMC understands that your seed and grain processing system should minimize product shrinkage and maximize the amount of product in the bag.

Every seed and grain system, every machine, is custom-designed to meet the unique needs of each customer and their process. LMC can supply the screen you need at a reasonable price and a competitive delivery time.

FROM THE COMBINE TO THE BAG, LMC IS HERE TO HELP.



MILLED STEEL



ALUMINUM



SOFT WOOD



STAINLESS STEEL



HARD WOOD



GRAIN & SEED CLEANING SCREENS

OUR FINEST FRAME MATERIALS

Our frames are made of selected straight grained wood top grade steel and aluminum. They are designed to fit a variety of machines and applications and with a generous assortment of sizes to help select the correct screens for your larger cleaning or sizing operations.

Our milled steel is an iron-carbon alloy that is both malleable and flexible. Our stainless steel contains additional compounds that reduce atmospheric and hydro-corrosion and increases the hardness of the steel. Our Aluminum frames resists corrosion, have an increased strength in cold environments and an excellent strength to weight ratio. With both hard and soft woods you'll find your perfect frame.

WE'VE DONE THE RESEARCH SO YOU CAN FIND THE PERFECT SCREEN TO FIT YOUR NEEDS

SIZE CHART

ROUND HOLE

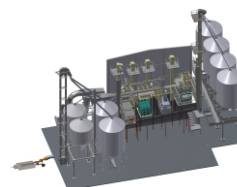
1 / 25	7 1/2 / 64	16 / 64	25 / 64
1 / 24	8/64	16 1/2 / 64	26 / 64
1 / 23	8 1/2 / 64	17 / 64	27 / 64
1 / 22	9/64	17 1/2 / 64	28 / 64
1 / 20	9 1/2 / 64	18 / 64	29 / 64
1 / 19	10 / 64	18 1/2 / 64	30 / 64
1 / 18 or 3 1/21 / 64	10 1/2 / 64	19 / 64	31 / 64
1 / 17	11 / 64	19 1/2 / 64	32 / 64 or 1 / 2
1 / 16 or 4 / 64	11 1/2 / 64	20 / 64	34 / 64
1 / 15	12 / 64	20 1/2 / 64	36 / 64
1 / 14 or 4 1/2 / 64	12 1/2 / 64	21 / 64	38 / 64
1 / 13 or 5 / 64	13 / 64	21 1/2 / 64	40 / 64 or 5 / 8
1 / 12 or 5 1/2 / 64	13 1/2 / 64	22 / 64	42 / 64
6 / 64 or 3 / 32	14 / 64	22 1/2 / 64	48 / 64 or 3 / 4
6 1/2 / 64	14 1/2 / 64	23 / 64	56 / 64 or 7 / 8
7/64	15 / 64	23 1/2 / 64	64 / 64 or 1"
	15 1/2 / 64	24 / 64 or 3 / 8	

OBLONG HOLE

1/24 x 1/2	4 1/2 / 64 x 1/2 or 1/14 x 1/2	7 1/2 / 64 x 3/4	14/64 x 3/4
3/64 x 5/16	4 7/8/64 x 3/4	8/64 x 3/4	15/64 x 3/4
1/22 x 1/2	5/64 x 1/4 or 1/13 x 1/4	8 1/2 / 64 x 3/4	16/64 x 3/4 or 1/4 x 3/4
1/20 x 1/2	5/64 x 1/2 or 1/13 x 1/2	9/64 x 3/4	17/64 x 3/4
3 1/2 / 64 x 1/4 or 1/18 x 1/4	5/64 x 3/4 or 1/13 x 1/4	9 1/2 / 64 x 3/4	18/64 x 3/4
3 1/2 / 64 x 1/2 or 1/18 x 1/2	5 1/2 x 1/4 or 1/12 x 1/4	10/64 x 3/4	19/64 x 3/4
3 1/2 x 3/4 or 1/18 x 3/4	5 1/2 / 64 x 1/2 or 1/12 x 1/2	10 1/2 / 64 x 3/4	20/64 x 3/4 or 5/16 x 3/4
1/17 x 1/2	5 1/2 / 64 x 3/4 or 1/12 x 3/4	11/64 x 3/4	22/64 x 3/4
4/64 x 1/4 or 1/16 x 1/4	6/64 x 1/2 or 3/32 x 1/2	11 1/2 / 64 x 3/4	24/64 x 3/4 or 3/8 x 3/4
4/64 x 1/2 or 1/16 x 1/2	6/64 x 3/4 or 3/32 x 3/4	12/64 x 3/4	32/64 x 3/4 or 1/2 or 3/4
1/15 x 1/2	6 1/2 / 64 or 1/10 x 1/2	12 1/2 / 64 x 3/4	36//64 or 3/4
4 1/2 / 64 x 1/4 or 1/14 x 1/4	6 1/2 / 64 x 3/4	13/64 x 3/4	
4 1/2 / 64 1/4 or 1/14 x 1/4	7/64 x 3/4	13 1/2 / 64 x 3/4	

SEE OUR FULL LINE OF CLEANING & PROCESSING EQUIPMENT

LEADING EDGE INDUSTRY SOLUTIONS



835 - 58th Street East
Saskatoon, Saskatchewan
Canada S7K 6X5
1-306-242-9292
Toll Free: 1-800-667-6924
Email: lmc@lmccanada.com
www.lmccanada.com

